

**ATL**

# Pharma ERP 1.0.0

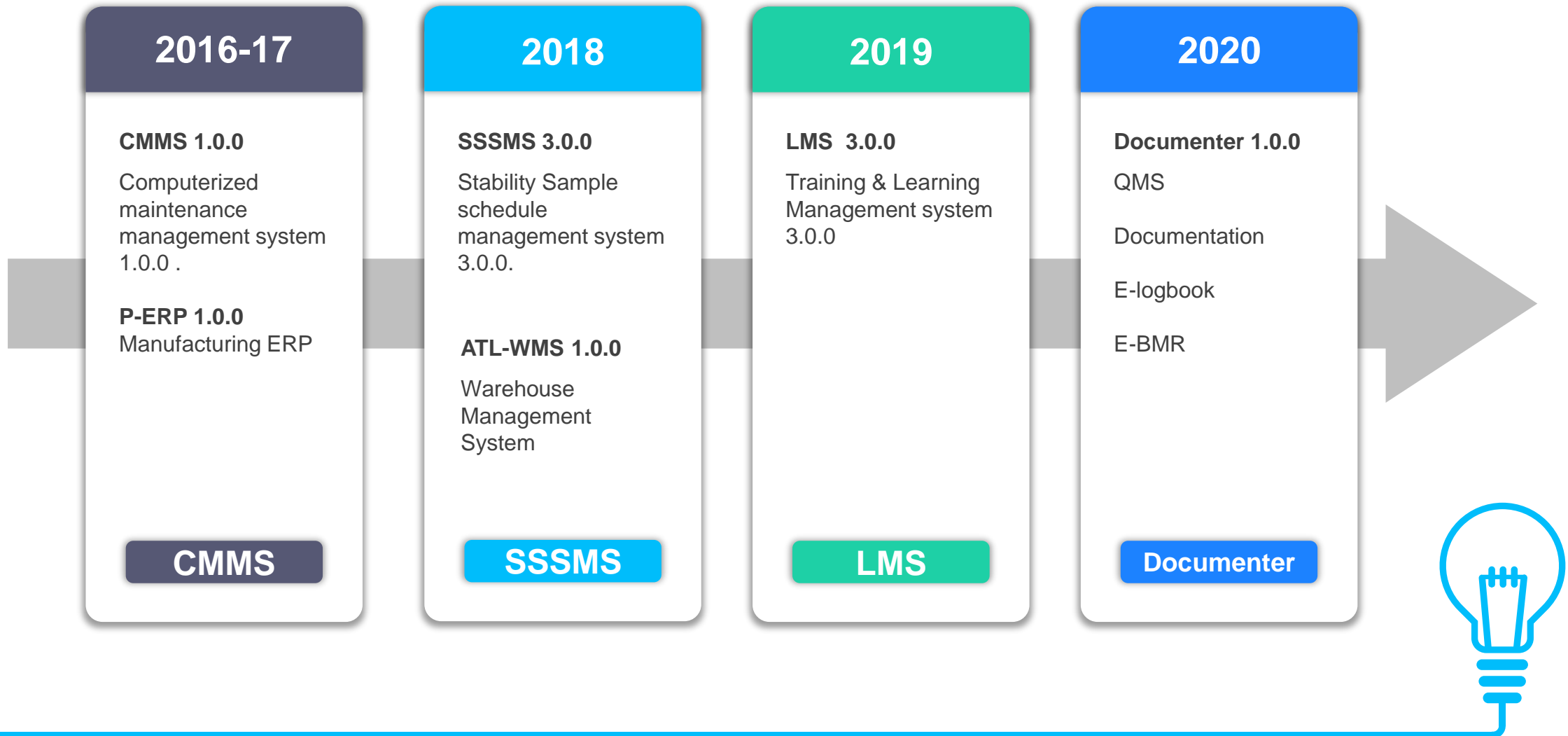
**Complete Pharmaceutical Manufacturing Solution**



USFDA-UKMHRA-GMP certified product



# TechLabPharma -Timeline



# Meet Our Team

Excellence Behind the product



Anvesha Tech Lab  
Private Limited

Develop &  
Conceptualized by



Tangenttech  
Infosoft Private Limited

Marketed & Validated By



# Modules



## 01 Sales

Inquiries management  
Sales goals management  
Sales order bookings

## 02 Order Booking & Analysis

Sales Order Analysis in terms of commercial and Technical.  
Generate Internal Sales Order from the customer sales order.

## 03 Procurement & Purchase

Cost Analysis.  
Indent & Vendor Purchase Orders management  
Timely Procurement planning.

## 04 Planning

Purchase Planning  
Production Planning

# Modules

## 05 QC

Purchase & Production Quality analysis of samples or entire batches. COA generation. Barcode Label generation as and when required at different levels.

## 06 Production

Complete Production Management

## 07 Dispatch & Deliveries

PI / PO or product wise Dispatch management

## 08 MIS & Reports

All sight full reports and analytics of the business.

# Modules



## 09 Warehouse Management

GRN- pick up – dispense . Entire warehouse management  
Barcode Enabled.

## 10 Inventory Management

BOM based inventory management  
Just in time inventory management

## 11 Dashboards

Operation analytics dashboards

## 12 Alerts

Alert the stock holders through SMS & Email



Production Planning &  
Inventory Management

Online Submission of  
collection vendor rates &  
analysis

Material Purchase Order &  
Service Purchase Orders

Raw Material Inventory  
Management

Packing Material Inventory  
Management

Production Module

In process (Multi Stage  
Production)

Provisional & Actual Batch  
Costing

Daily Production  
management

Stability Module

Stereo Management

Fix Assets Management

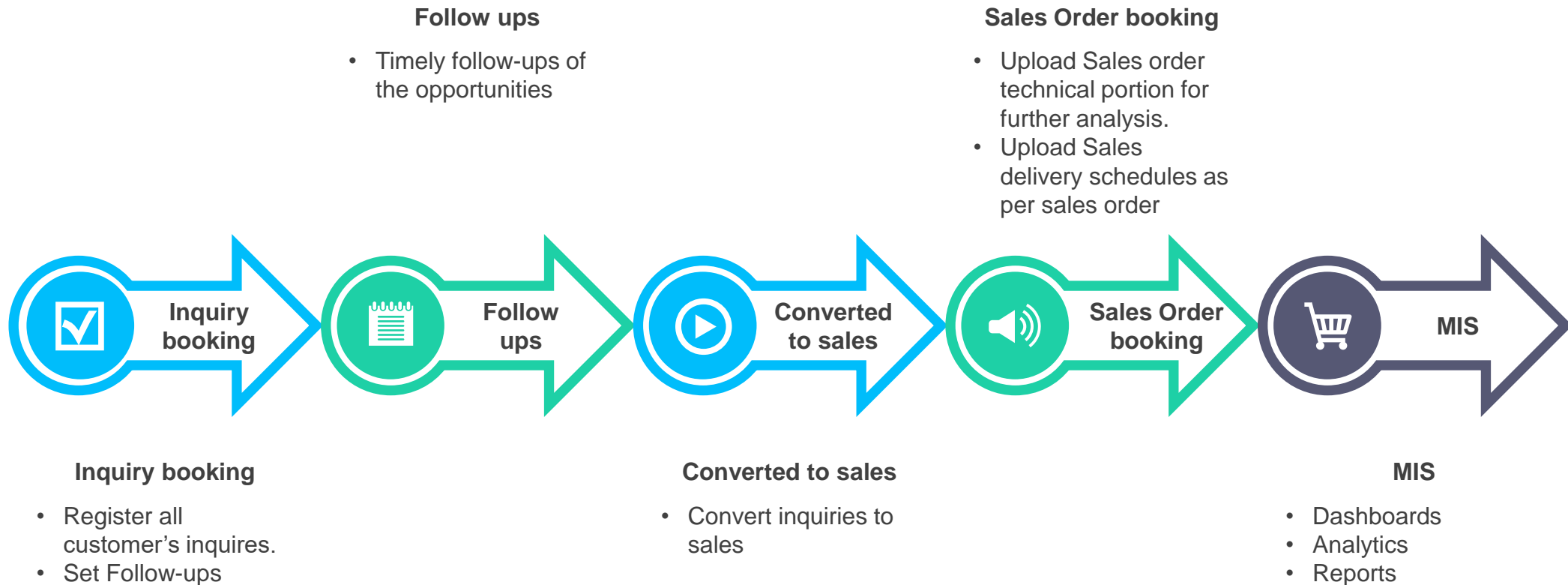


# Sales

Inquiries management  
Sales goals management  
Sales order bookings



# Sales Management



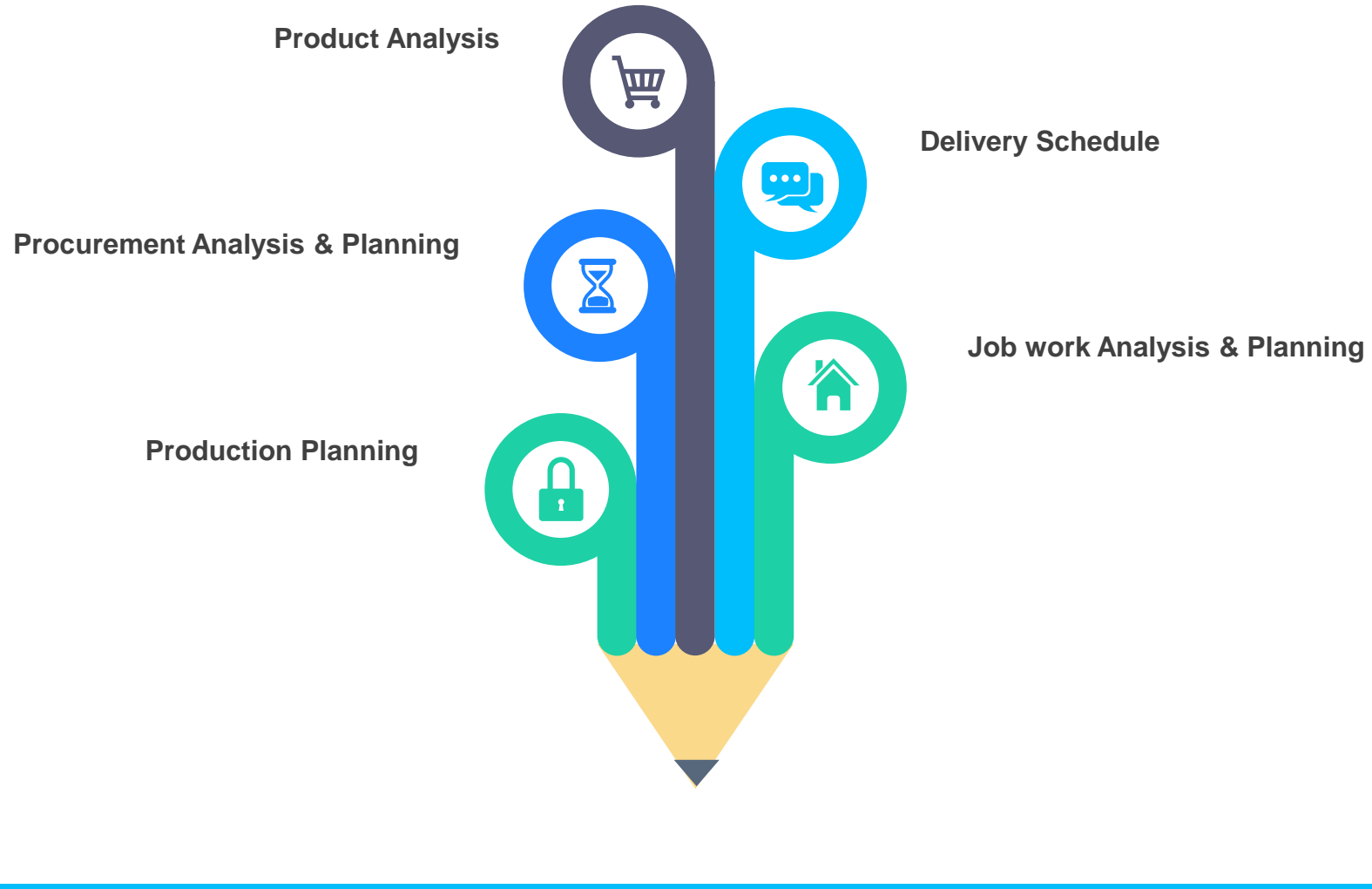


# Order Booking & Analysis

Sales Order Analysis in terms of commercial and Technical.

Generate Internal Sales Order from the customer sales order.

# Sales Order Booking





# Procurement & Purchase

Cost Analysis.

Indent & Vendor Purchase Orders management

Timely Procurement planning.

# Procurement



## **BOM vs Procurement Analysis**

Analysis of Material required as per BOM for particular sales order and available material in inventory.



## **Vendor Selection & Vendor Purchase Order**

Select Vendors and Generate Purchase orders for Material procurement



## **Job work purchase orders**

Select vendors for Job work and Generate Purchase orders for Material procurement

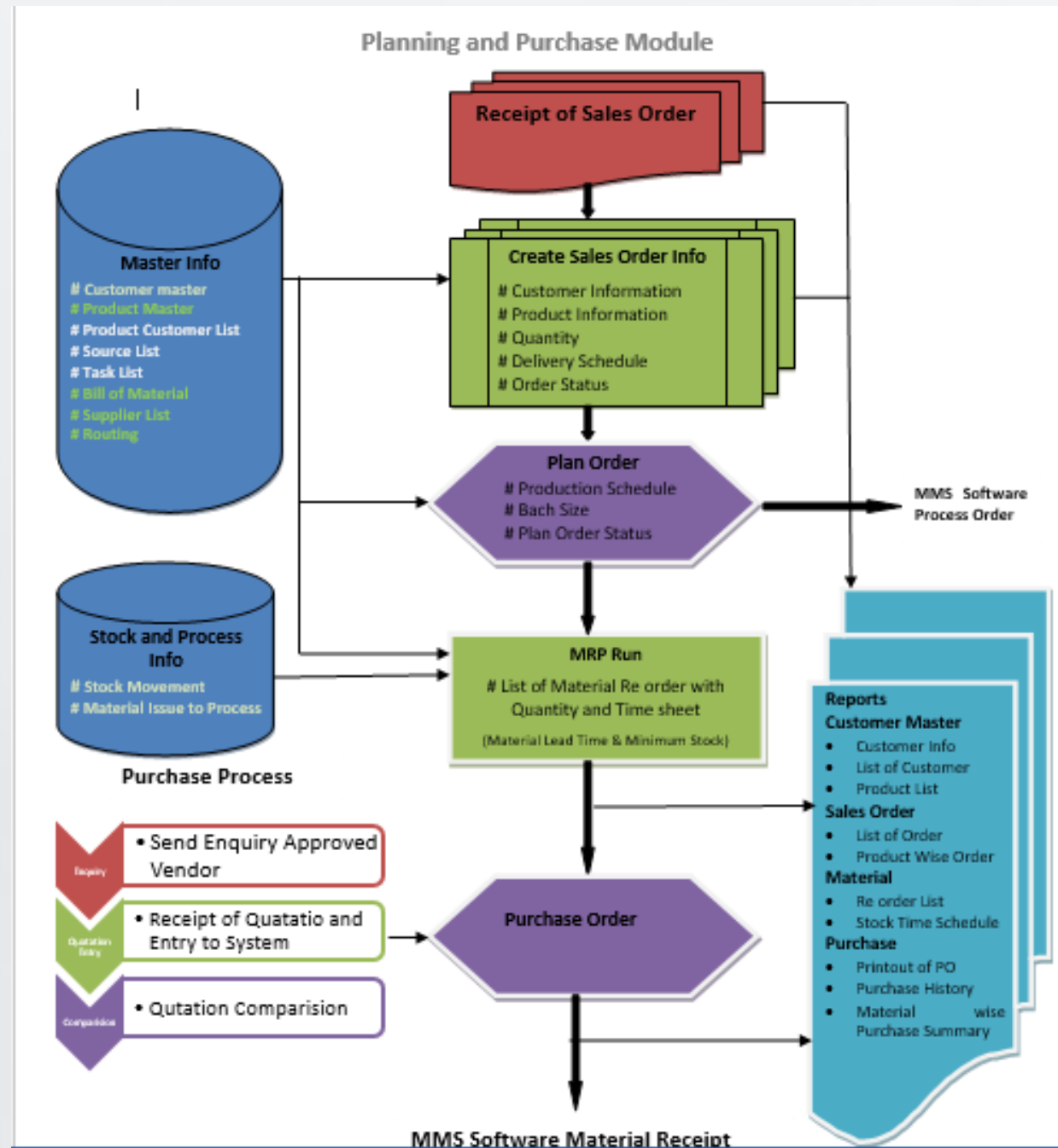


## **Online Vendor Rates Submission & Analysis**



# Planning

Purchase Planning  
Production Planning



# Purchase Planning

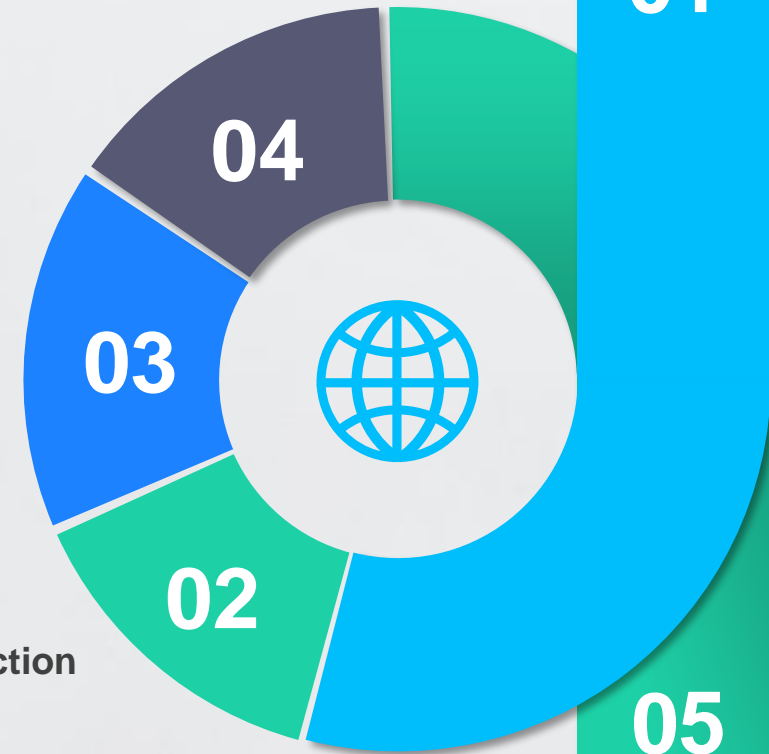
As per the delivery schedule of final product

As per the minimum Order Qty. of material

As per the Vendor's minimum Delivery timeline

As per the inventory material expiry date

As per the sales projection





# Production Planning

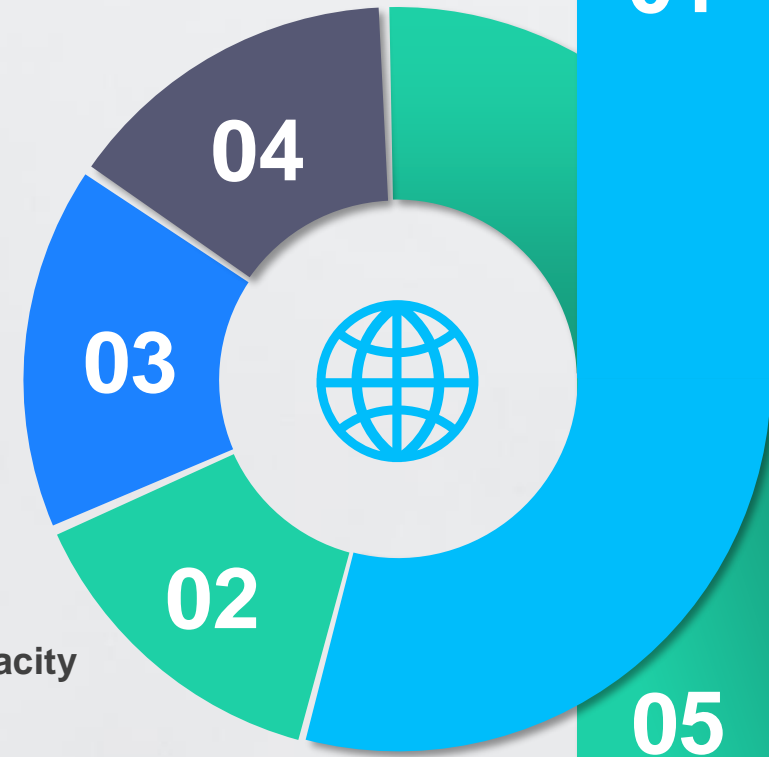
Stage wise production schedule

Item wise production schedule

Customer Pi wise production schedule

Outside Job work schedule

Schedule as per the production capacity

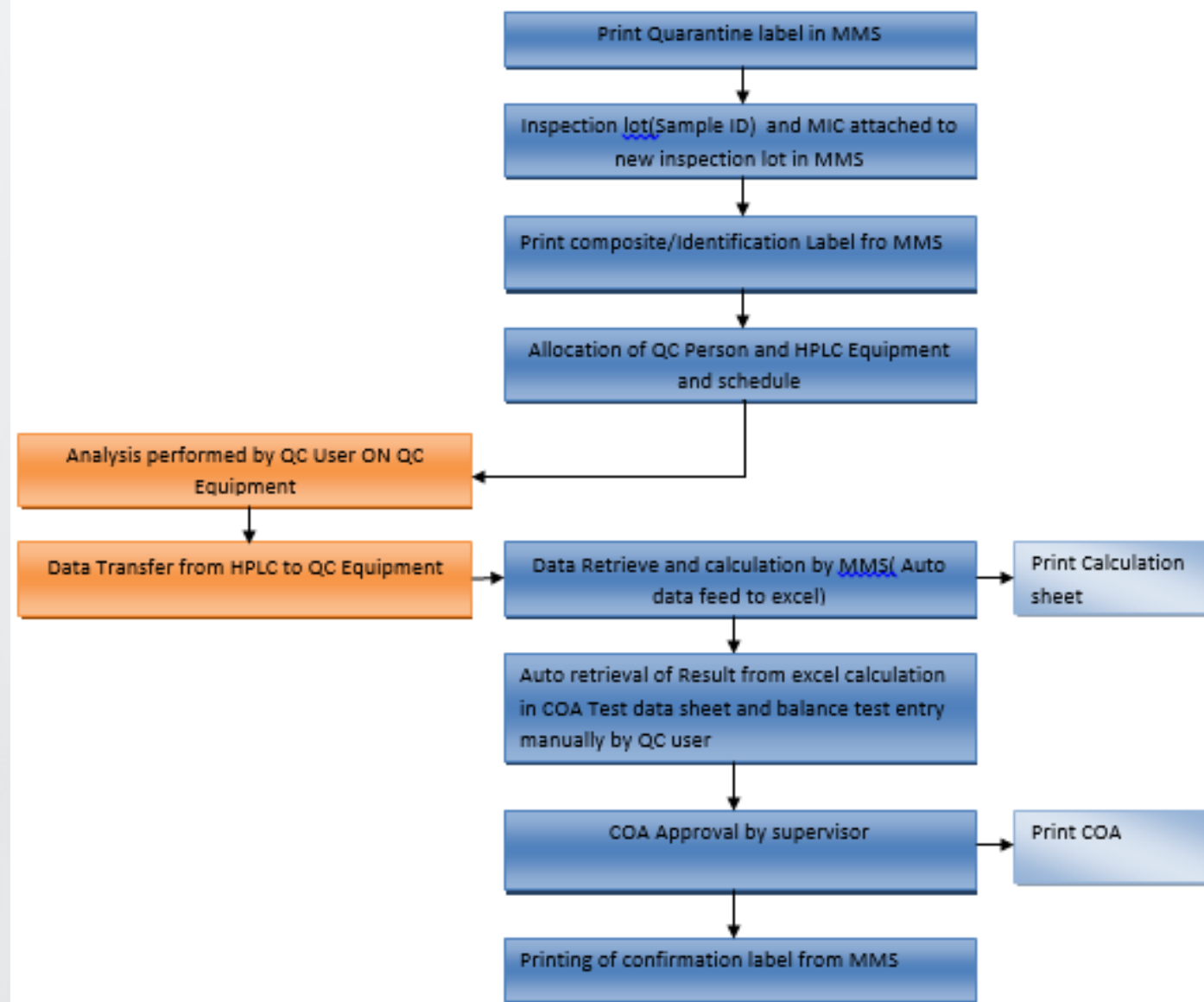


# QC

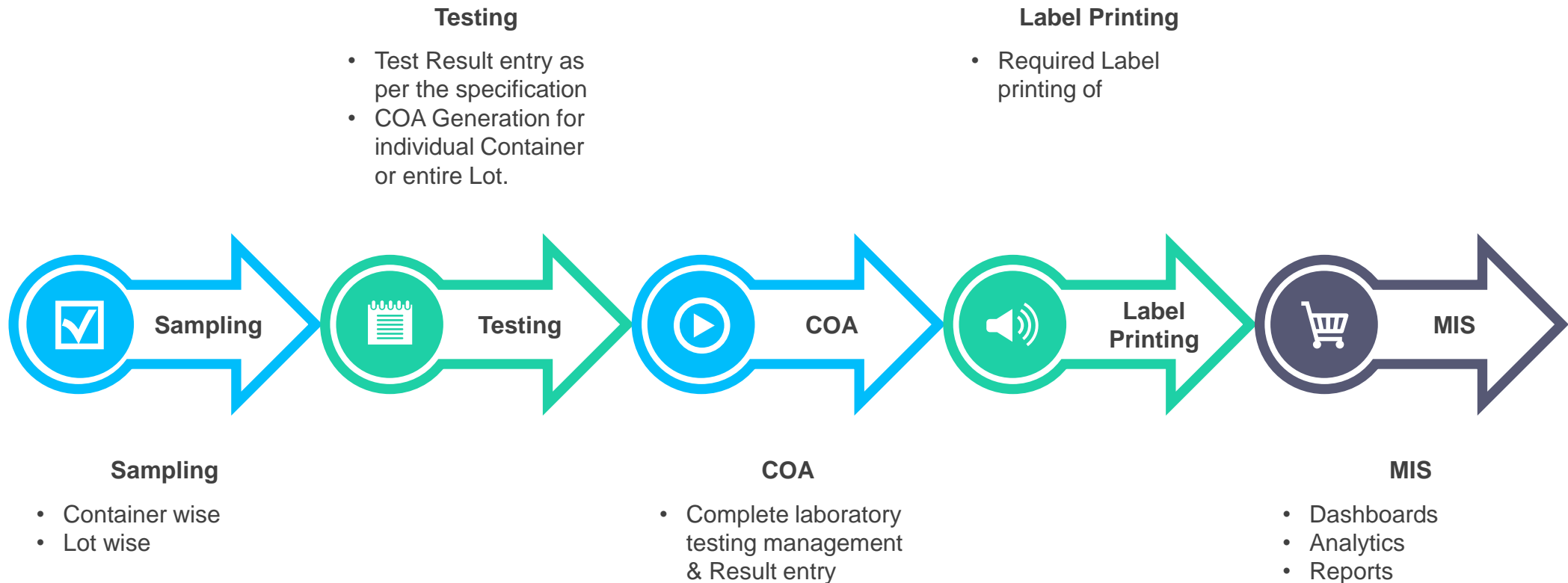
## Day to Day Process Transaction

- Material Receipt( Upload from SAP)
- Quarantine Label Printing
- QC sampling ( Composite sample)
- Result Recording
- Usage Decision
- Approve/Reject Label Printing
- COA Printing
- Manual Inspection Lot Creation
- Wait for Identification Label Printing (Optional)
- Identification Label Printing (Optional)
- Test Protocol Creation ( Customize as per User requirements)
- Test Report ( Customize as per User requirements)
- Other Reports





# Quality Analysis Process





# Production

FG-SFG Production

Stage wise Production

Batchwise Production

End to end material Traceability

# Production Process

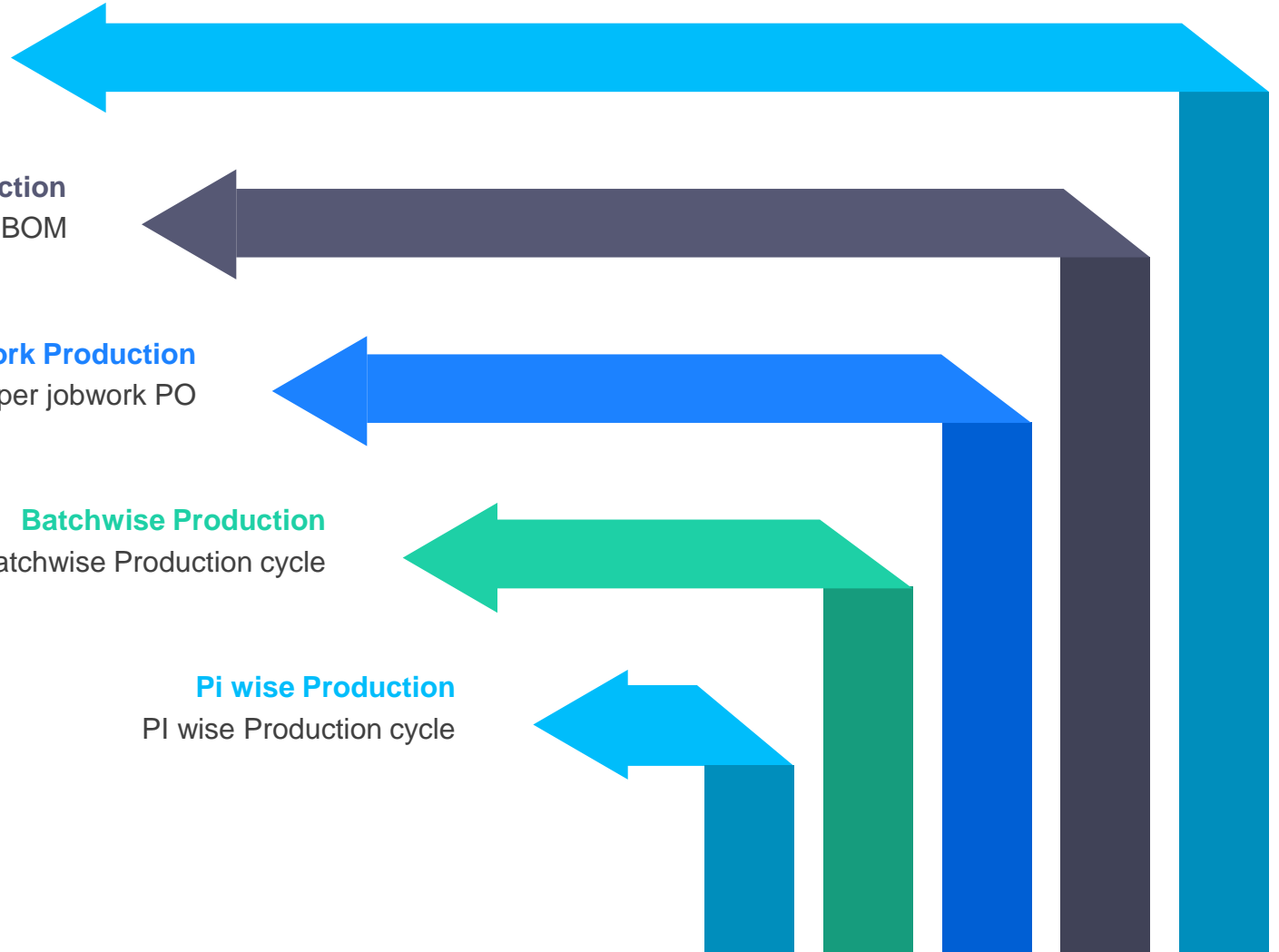
**FG Production**  
Production Against BOM

**SFG Production**  
Production Against BOM

**Job work Production**  
Production as per jobwork PO

**Batchwise Production**  
Batchwise Production cycle

**Pi wise Production**  
PI wise Production cycle





# Dispatch

Finished goods to PI mapping  
'PI to PI Transfer

PI to PO mapping

# Dispatches







# Warehouse Management

GRN- Pick up – Dispense . Entire warehouse  
management  
Barcode Enabled.



## Label Printing

Through integrated label printing utility, printing unique shipping labels for cartons and pallets is just a click away.

## Receiving

Receiving stock is to gain insights into shipments that have been delivered, but that are not yet at their final location. Material Receiving can be against **purchase order**, **transfer order** or **production order**.

## Location Marking

No matter how big or small your warehouse, location based storage of material increases the speed at which you can pick your orders, storage space utilization and the accuracy of your stock.

## Put Away

Put away helps to know the location of all inventories on your shelves. Put away location can be pre-defined according to material types or system guided based on the availability of space. Through **mobile computer**, scan location barcode first and then material barcode. System real time updates location of available stock. .

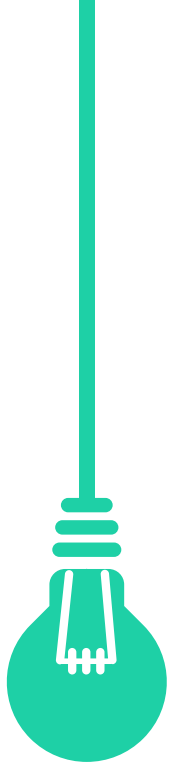
## Picking

Improve error-proofing and productivity in the picking process. Workers receive their picks on a mobile device that routes them to the proper location. Scanning items when you pick them verifies that the right item at the right quantity is picked. System also facilitates **FIFO, Expiry Date** and **LOT No** based picking.

## Re-packing/Palletizing:

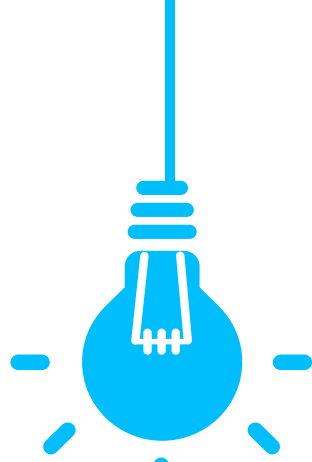
Once the material is picked it can be repacked or palletized. System facilitates **secondary pack barcode label printing** and **pallet barcode labels**. System also maintains serial no information of primary packages packed in secondary package or pallets.





### **Dispatch:**

At the loading point through **Mobile Computer** you can make sure intended products of intended quantity are being delivered to the party. System validates material being loaded against sales order or delivery challans.



### **Inventory Management: :**

It is very critical for an organization's success. Eliminate errors and time-consuming manual processes by centralizing product, customer and vendor records across all function.



### **Physical Stock Taking:**

Through Mobile Computer Inventory count can be done by scanning barcodes. At the end of operation system generates material variance reports as well as location wise material variance report.

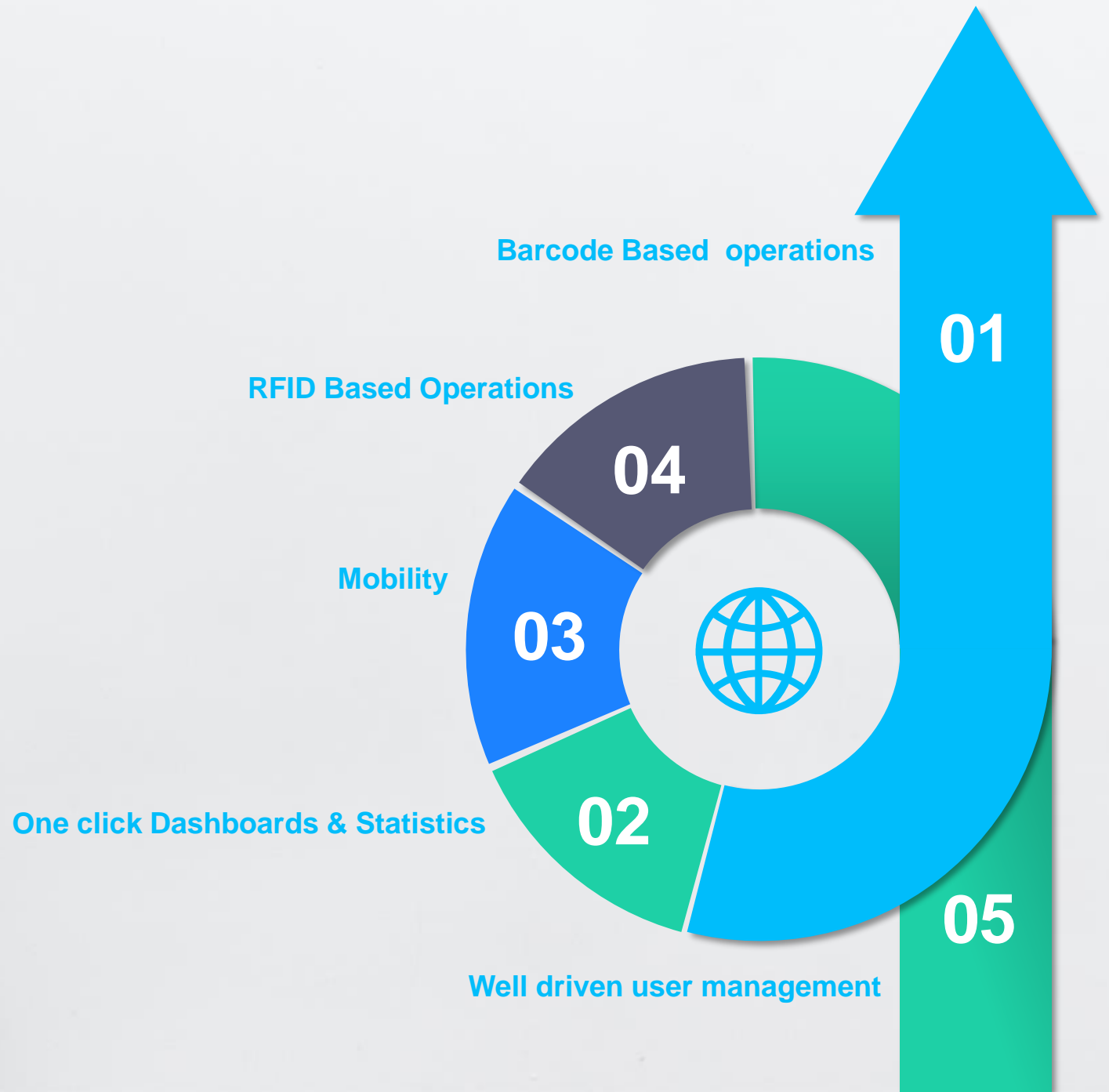


### **Reporting Management:**

The Warehouse Management System is designed to provide a wide range of useful enquiries and reports based on specific data analysis.

# Warehouse Management

## General Features

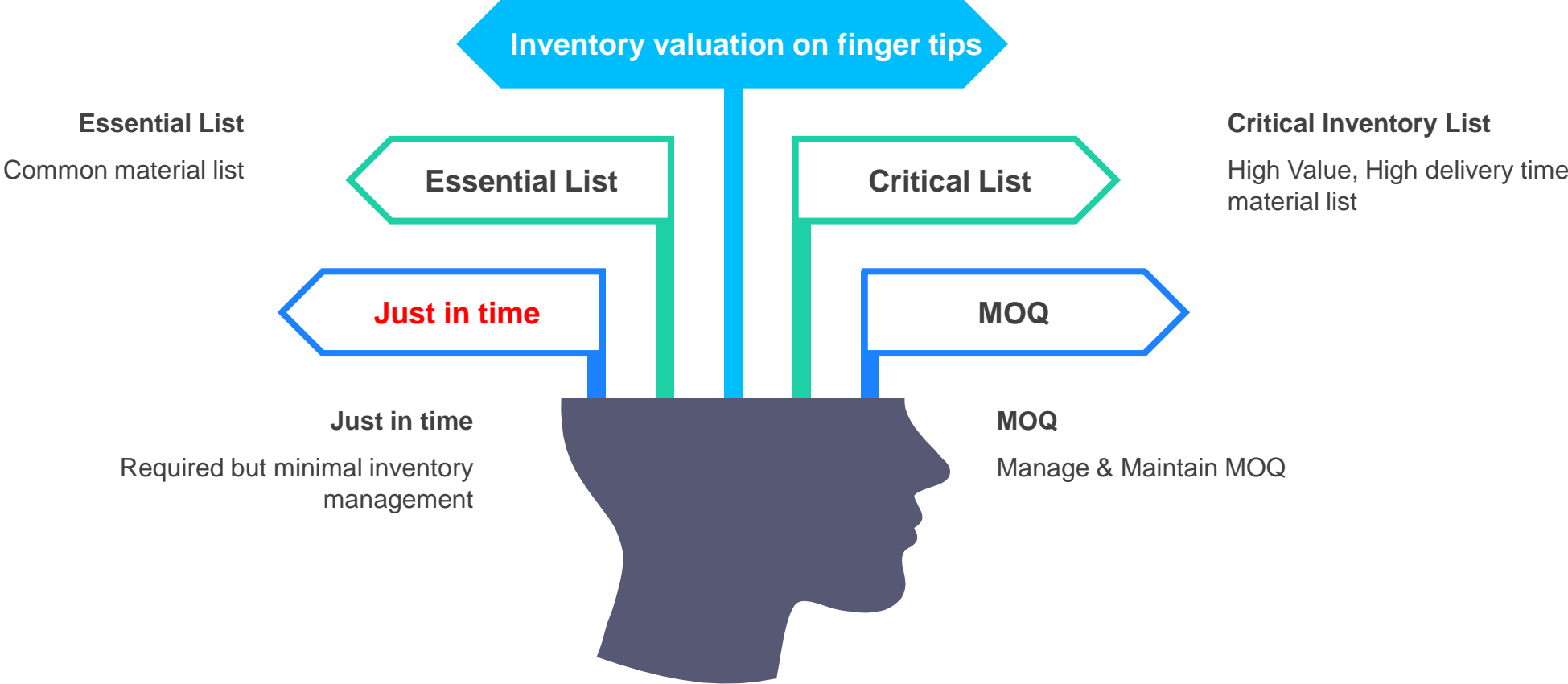




# Inventory Management

Purchase & Production Quality analysis of samples or entire batches. COA generation. Barcode Label generation as and when required at different levels.

# Inventory Management (FIFO)



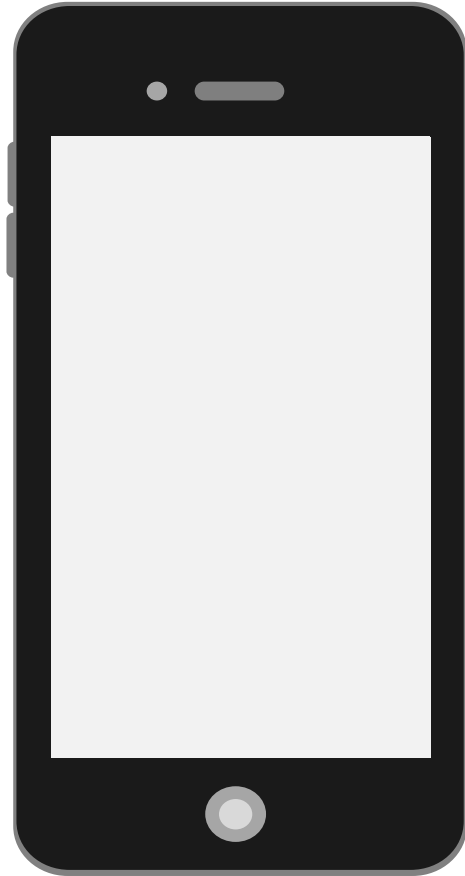


# MIS

Reports  
Dashboards  
Analytics



# SMS & Email Alerts



More than 30 email alerts to various stack holders

SMS for emergency situations to prevent production losses

# Compliance



Supported to Multi company, Multi location,  
Multi division and Multi currency



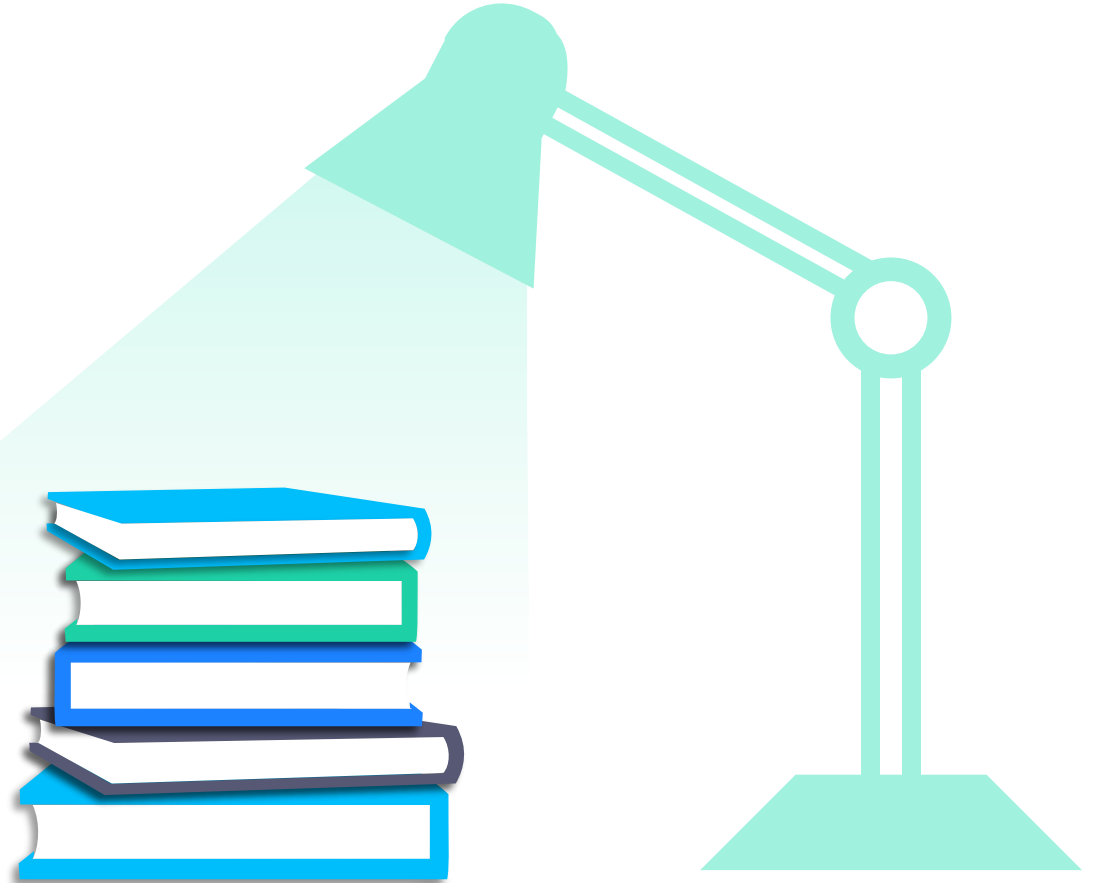
Comply cGMP, Schedule M and other  
regulatory requirement.  
Comply as per 21 CFR Part – 11  
Comply software validation requirement



Web based solution, anytime anywhere  
real time data



Integrated with 3<sup>rd</sup> Party solutions with API



We are having a 100% paperless solution. We not only encourage our customers to automate, but we also prove the efficiency of automation with ourselves



### 10x Faster Deployment

With our unique platform, you can get applications to market up to ten times faster and with fewer resources. Our solutions are geared to help clients maintain incisive focus on customer specific needs, while driving process excellence across the value chain

### Domain Expertise

To level up to various industry difficulties, the Team comprises exceptional domain experts who provide cutting-edge solutions that are tailored to meet the specific needs of clients.

### Project Success Rate

The success rate of our solutions is 99%, compared to the industry average of 56%. All of the solutions we provide have the potential to generate revenue and reduce costs.



# Thank You



Anvesha Tech Lab Private Limited  
Mr. Priyank Patel (+91 99250 06832)

406-Shivalik Corporate Park  
Ahmedabad-380015,India  
Info@anveshatechlab.com  
www.anveshatechlab.com

Marketed By  
Tangenttech Infosoft Private  
Limited

**Mr. Kiran Patel (+91 93257 91840)**

**Mr. Jayesh Patel (+91 93272 52374)**

319-320 Devnandan Mall, Opp. Sanyas Ashram,  
Ashram Road, Ahmedabad- 38009 ,India

Kiran@tangenttechnologies.in

jayesh@tangenttechnologies.in

